



# E&G AFFORDABLE HOUSING

---

Making Home Ownership a Reality



## About Us

E & G Affordable Housing introduces a stunning Eco Building Technology using Precast Concrete Panels & Interlocking Concrete Blocks that are remarkably affordable, strong and with a lifetime guarantee.

### Services

- Defining and establishing the scope of the construction project.
- Pre-construction project planning including preparation and scheduling of the project, drawings and phasing plans, budgeting/cost-modeling, subcontractor qualification etc.
- On-site execution of the project includes scheduling, quality control, safety management, subcontractor management, status reporting and change management. Monitoring and controlling the project.





## Benefits Of Concrete Precast Panels

- Less Labour Costs
- Space Saving
- Safer
- Durable
- Strong
- Sound Proof





## Benefits of interlocking Blocks

- **Cost Effective**
- **Environmental Friendly**
- **No plastering required**
- **Beautiful Finish**





## Mission

Providing affordable housing for all

## Vision

Making home ownership a reality

**Why**

**? US**



## Why Us

- Build your home fast and efficiently in a record time of 8 weeks
- Save money as our technology saves up to 30% off building costs
- Flexible payments to suite your pocket
- Professional Country wide services
- Quality un compromised



## **Ethics**

### **1) Passion**

### **2) Excellence**

### **3) Quality**

### **4) Commitment**

## **Capacity**

- We have over the past few years made significant investment towards building a strong equipment backbone.
- The Management of the Company emphasizes in growing the Company's capacity to manage and deliver mass projects fast and efficiently.



**Step 1**

**Site assessment**

**Step 2**

**Discuss and Agree on design**

**Step 3**

**Sign Contract**

**Step 4**

**Project Handing Over!!**



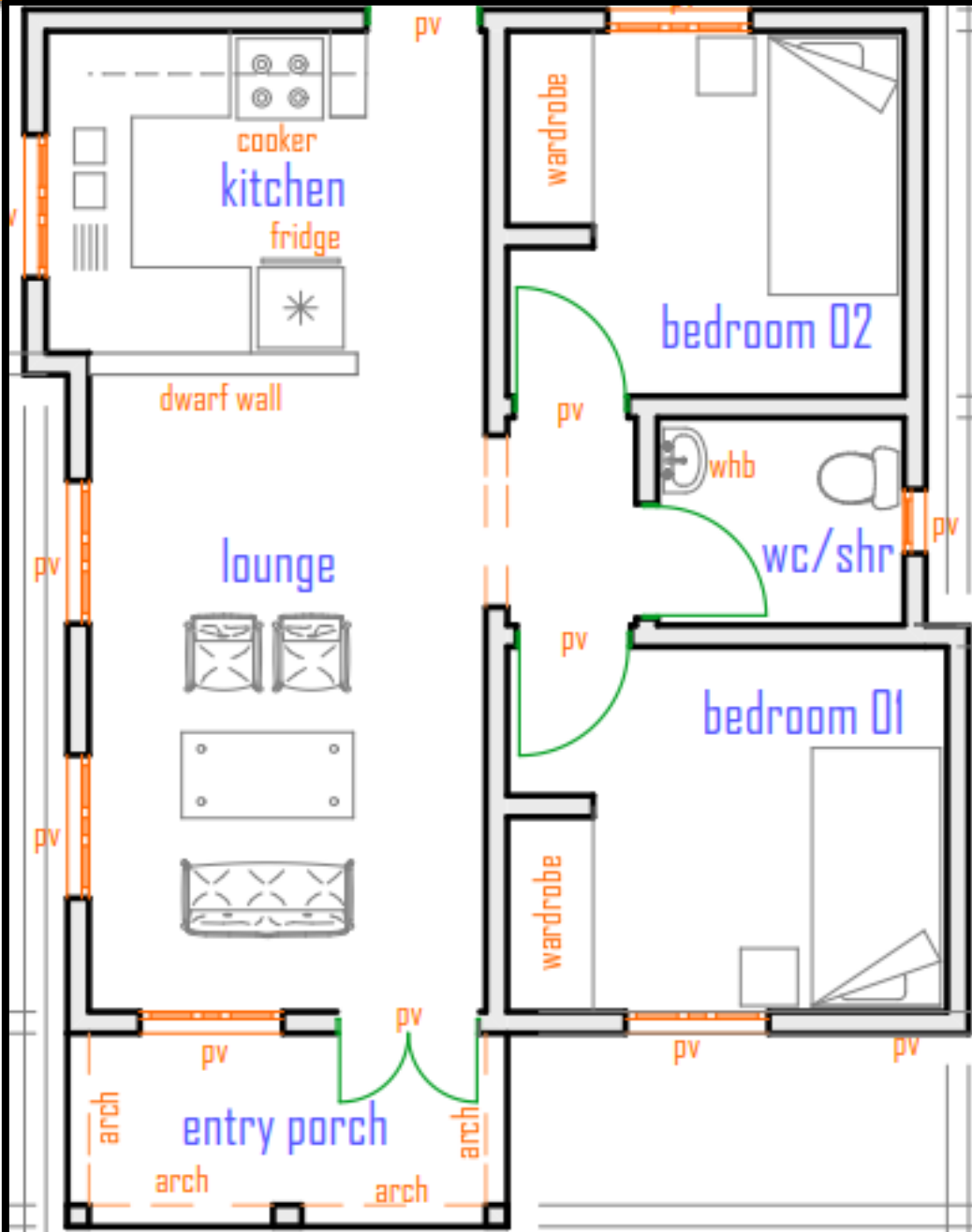
**Jenga Chap Chap, Lipa Pole Pole**  
**Up-to 100 Percent financing on construction cost at an interest rate of 13-14 Percent per annum. Repayment Period of up 9 years**

## **Pre-development Requirements**

- ✓ Site Assessment by our professional engineers and architects
- ✓ Architectural Plans
- ✓ Bill of Quantities (BOQ)
- ✓ Proof of income (payslips or bank statements)



# House Models 2 Bedroom



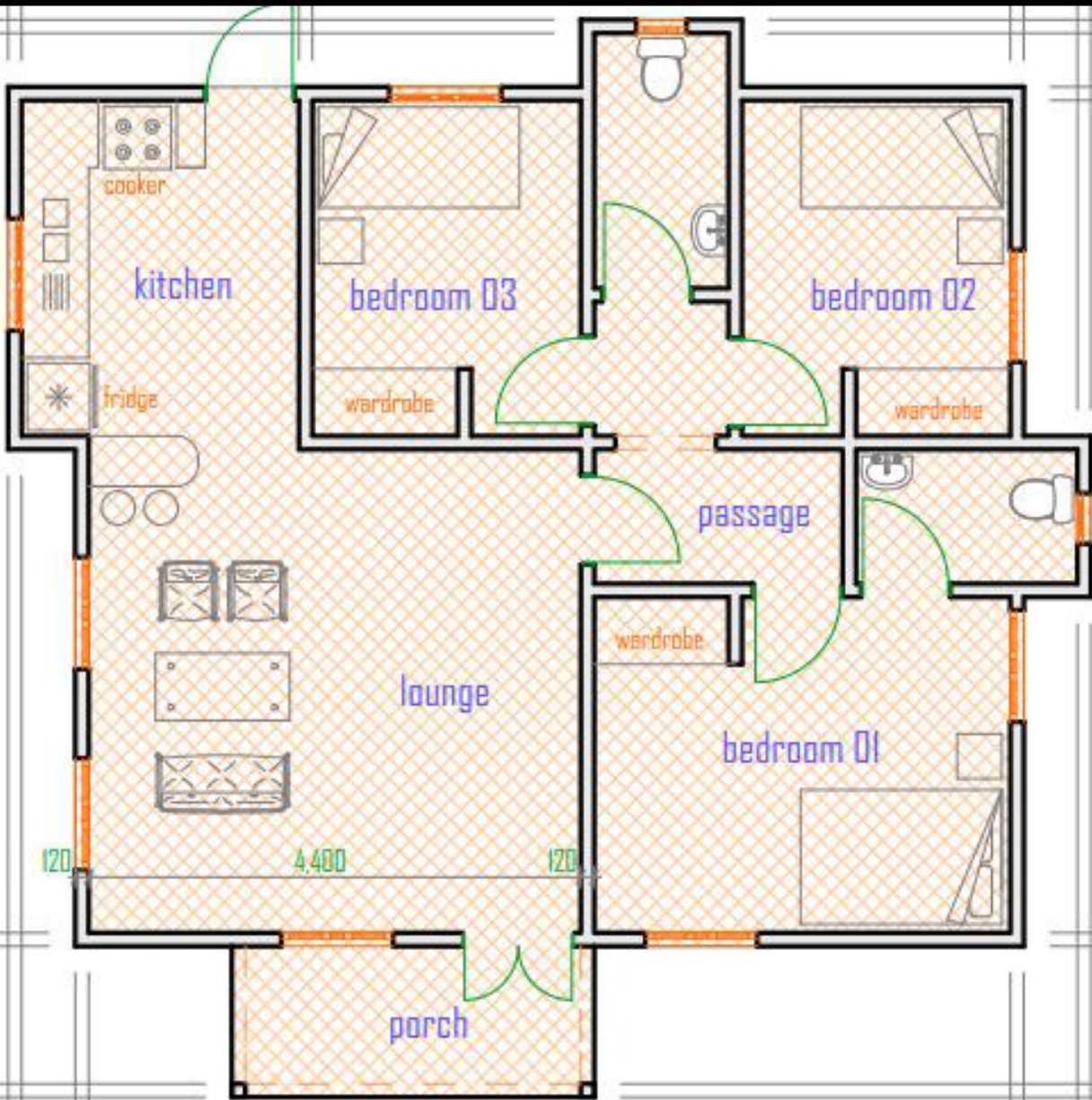
**54m<sup>2</sup> = Ksh 1.8m**

## LOAN SUMMARY

<i>Loan amount</i>	Ksh.1,800,000
<i>Annual interest rate</i>	14%
<i>Loan period in years</i>	9
<i>Number of payments per year</i>	12
<i>Payments per month</i>	Ksh.29,401

# House Models

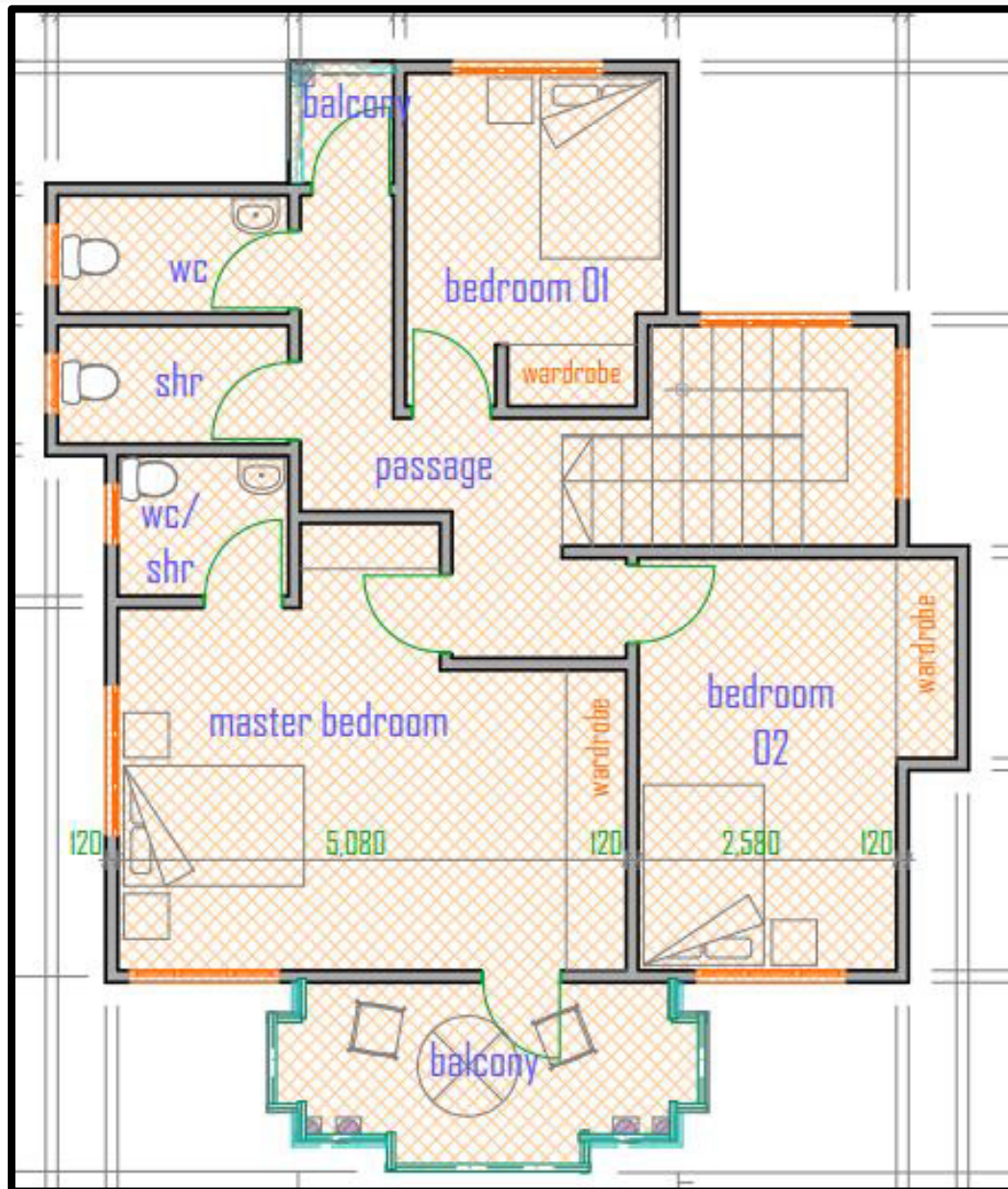
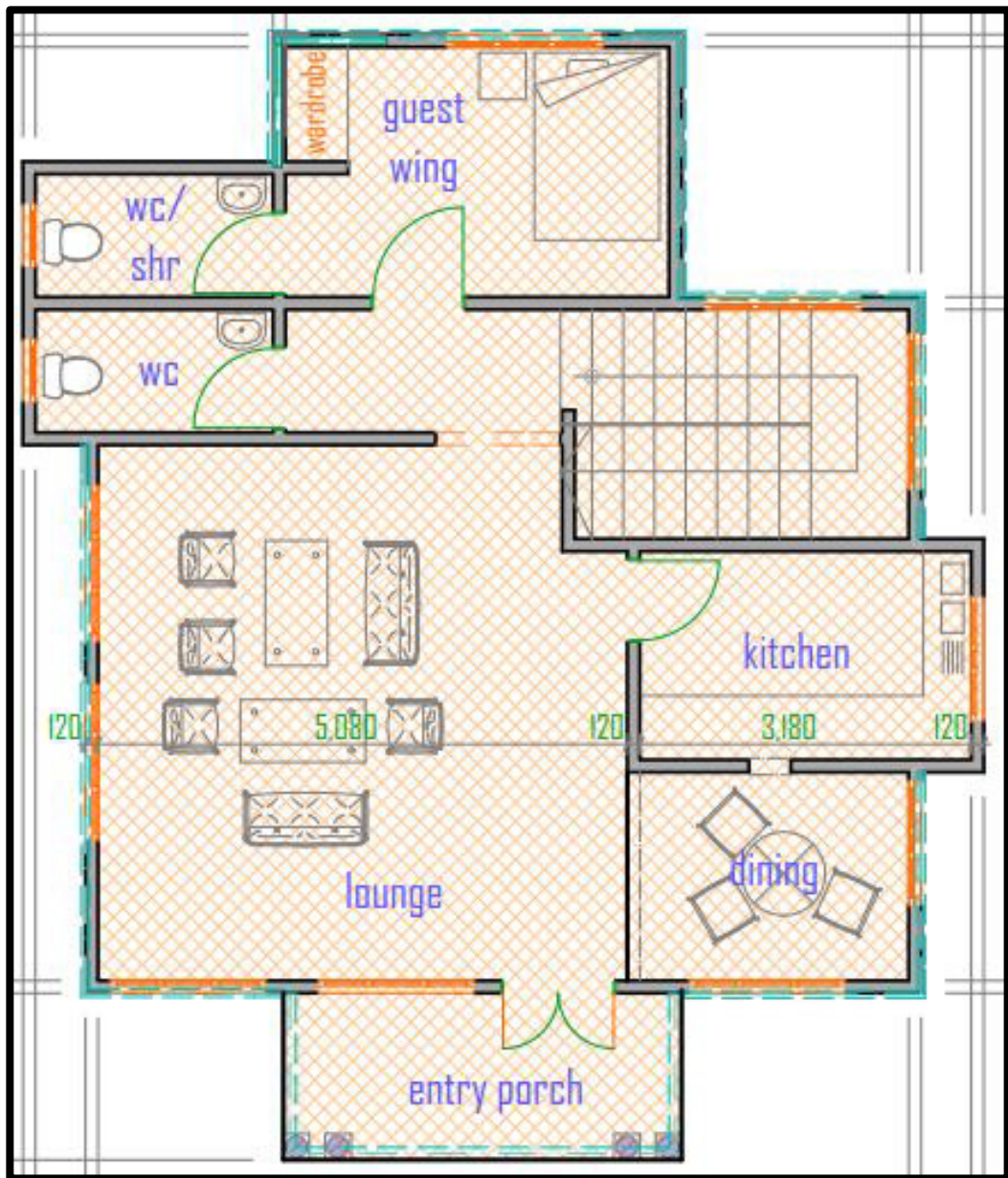
## 3 Bedroom



**75m<sup>2</sup> = Ksh 2.4m**

### LOAN SUMMARY

<i>Loan amount</i>	Ksh.2,400,000
<i>Annual interest rate</i>	14%
<i>Loan period in years</i>	9
<i>Number of payments per year</i>	12
<i>Payments Per Month</i>	Ksh.39,201





### LOAN SUMMARY

<i>Loan amount</i>	Ksh.4,800,000
<i>Annual interest rate</i>	14%
<i>Loan period in years</i>	9
<i>Number of payments per year</i>	12
<i>Payments Per Month</i>	Ksh78,402

**150m<sup>2</sup> = Ksh 4.8m**



- 1) Ceramic Tiles floor
- 2) Simple Gypsum flat ceiling
- 3) Box profile roof
- 4) Zero Joint Tiles Kitchen top
- 5) 1000 Litres tank
- 6) Electric Wiring and fittings
- 7) Plumbing and fittings
- 8) Basic landscaping
- 9) Optional Solar water heater system at an additional Kes 200,000.



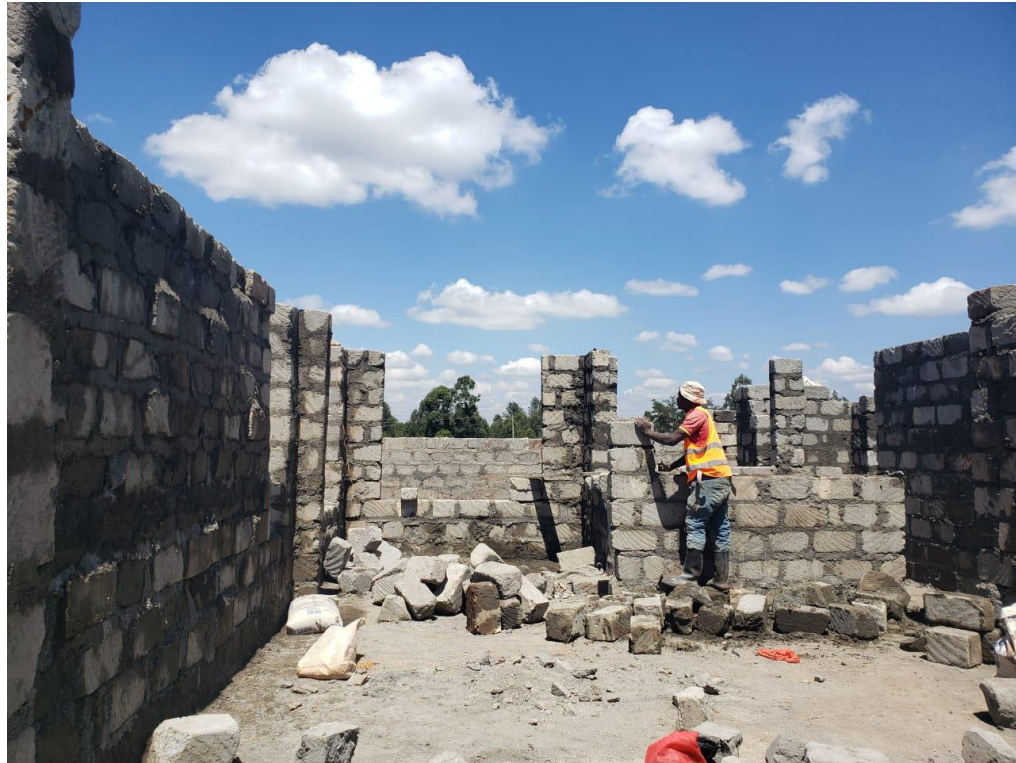






















# GET IN TOUCH



+254717507441 / +254720424776



info@affordablehousing.co.ke



[www.affordablehousing.co.ke](http://www.affordablehousing.co.ke)



E & G Affordable Housing



Spur Mall, Second Floor.  
Thika Road, Exit 13

*Thank You!*